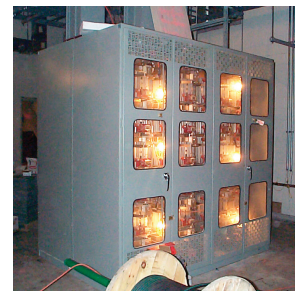




## Electrical Substation at Temporary Path Station at World Trade Center Site, New York, New York

The Ives Group led by Joel Ives, AIA is part of the Port Authority Team to restore the Path Railroad Station, which was destroyed on September 11, 2001. Working closely with the Port Authority architects we prepared construction documents for the electrical substation, platforms, and elevators. The first stage of the project required our in-house team to prepare more than 100 Cadd drawings under a fast track schedule coordinated with a team of professional engineers and specialists located throughout the NYC metropolitan region. Difficult schedules and quality control goals were met for this project which is under the watchful eye of the world due to its international importance. The Ives Group is proud to be part of the Port Authority Team at this critical time in our nation's history.



PA40



# THE IVES ARCHITECTURE STUDIO

14-25 Plaza Rd. Suite S-3-5 Fair Lawn, New Jersey 07410 (201)773-9111

